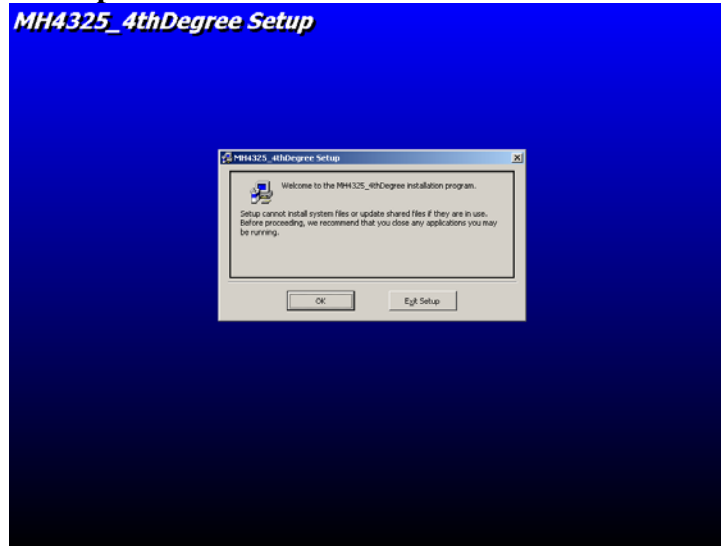


INSTALLATION

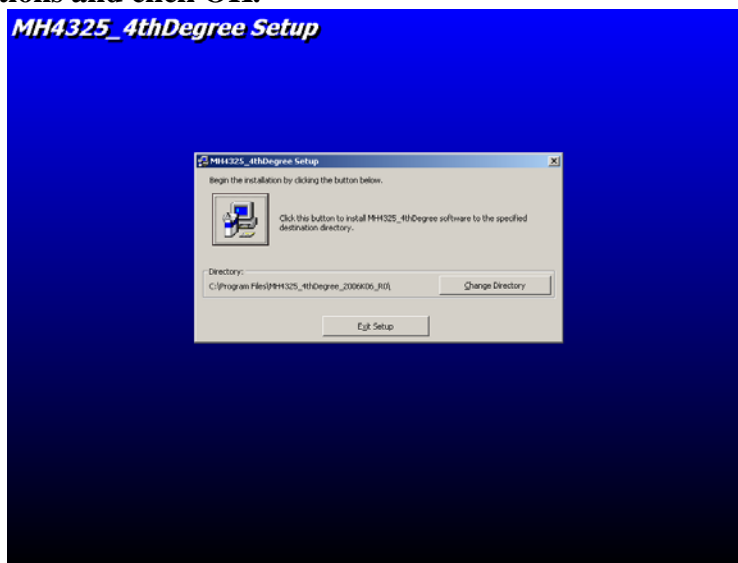
FROM THE INTERNET OR FROM A CD SUPPLIED BY MOREHOUSE.

STEPS:

- Either download from the link <http://www.mhforce.com/download.htm> or insert the CD with the appropriate files
- Click on the setup.exe file



- The screen above should be what you see. Please close other open applications and click OK.



- The next step is to choose the directory you want to install the software. By default it will be installed to C:\ProgramFiles\ you can change the directory by clicking on Change Directory to install the software on whichever drive or directory you wish. This will be followed by another screen asking you to choose program group. You may click OK or change the name of the program if you wish and then click OK. The next message will be that setup was successful. If you are using a newer 4215 with an active USB port you will need to install another file on the disk. Locate the file CDM_Setup and double click it. You should receive a message stating FTDI CDM drivers have been successfully installed.

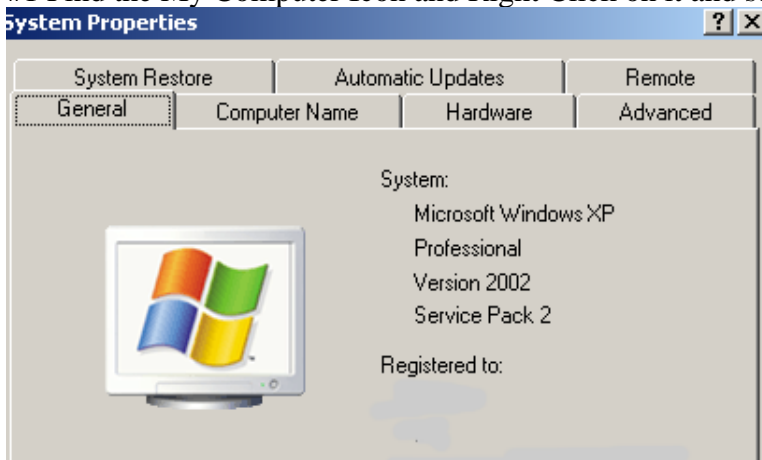
CONFIGURING A COMM PORT

STEPS:

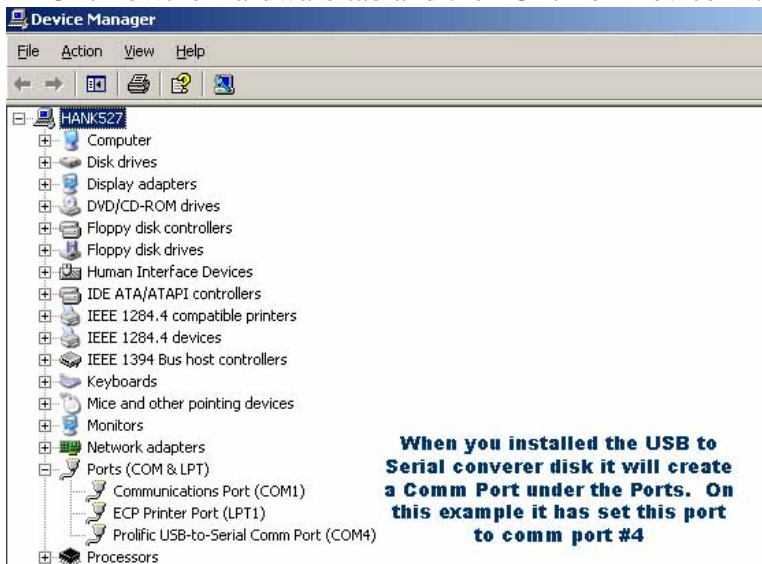
PLEASE NOTE: DIFFERENT OPERATING SYSTEMS MAY HAVE DIFFERENT WAYS TO CHANGE OR CONFIGURE THE COMM PORT ON THE SYSTEM. PLEASE CONSULT THE MANUALS OR HELP FILES PROVIDED BY THE PARTICULAR SOFTWARE MANUFACTURER IF THESE STEPS DO NOT WORK.

FOR MICROSOFT WINDOWS SYSTEMS:

#1 Find the My Computer Icon and Right Click on it and select Properties




#2 Click on the Hardware tab and then Click on Device Manager

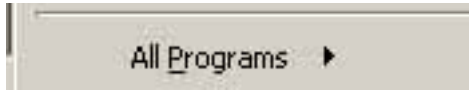


#3 If the USB-to-Serial Comm Port is COM1, COM2, COM3 or COM4 proceed to the next step. If the Comm Port is not one of these 4 it will need to be changed. In some instances it can be changed by clicking on USB-to-Serial Comm Port, Then Going to the **Port Settings Tab** clicking on **Advanced** and changing the Comm port to a Comm port between 1-4. If the software did not install on any of the 1st 4 ports and cannot be changed please contact the operating software's manufacturer.

LOCATING THE SOFTWARE

Make sure everything is connected and setup per previous instructions.

The program can be found manually or by going to  then selecting



From here locate this and left click on the

highlighted

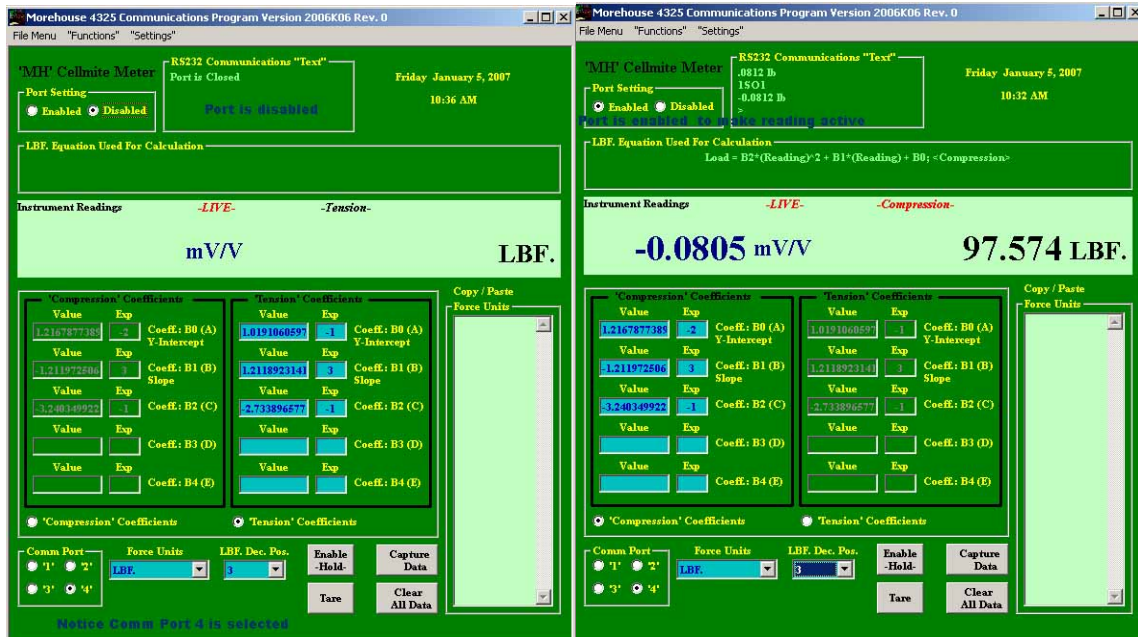
Area   Note: if you want to create a desktop shortcut **right click** on the highlighted file and select “Send to” then **Desktop (create shortcut)**



This is the screen that should now be seen. Before selecting Enabled the correct Comm Port should be selected and Coefficient files should be loaded from the File Menu. In this example the Comm Port will be set to ‘4’ and an inverse coefficient file will be loaded.

USING THE SOFTWARE

Before using the software click on **File Menu**, Coefficients then New or Open. If you have a Disc and have had calibrations performed by Morehouse Instrument Company the disk should contain a folder with your current calibration coefficients click Open and locate the file you wish to load. If you already have the software and wish to enter your new coefficients you should click New and proceed to enter the appropriate numbers.



After the coefficients file has been loaded the screen should look like the one pictured left above. This example uses second degree inverse coefficients and is a universal load cell (both compression and tension) the calibration report issued will show what degree fit yields the lowest uncertainty.

To begin using the program under **Port Settings** click the **Enabled radio button** (pictured top right). This will set the unit in live mode from here you should tare the unit and then proceed to apply weight. It is recommended that you exercise the unit a few times and then tare the unit before starting you calibration

A few quick pointers:

Mouse clicking on a button will enable that button to be controlled using the spacebar. If you mouse click on Capture Data the data will be captured and hitting the spacebar will toggle the button press. If you then press Enable Hold the spacebar will control this function.

CONTACT INFORMATION

Henry Zumbrun

E-mail: HZUMBRUN@MHFORCE.COM

Fax# 717-846-4193

Phone # 717-843-0081

Address: Morehouse Instrument Company, Inc.

1742 Sixth Ave

York Pa 17403

USA